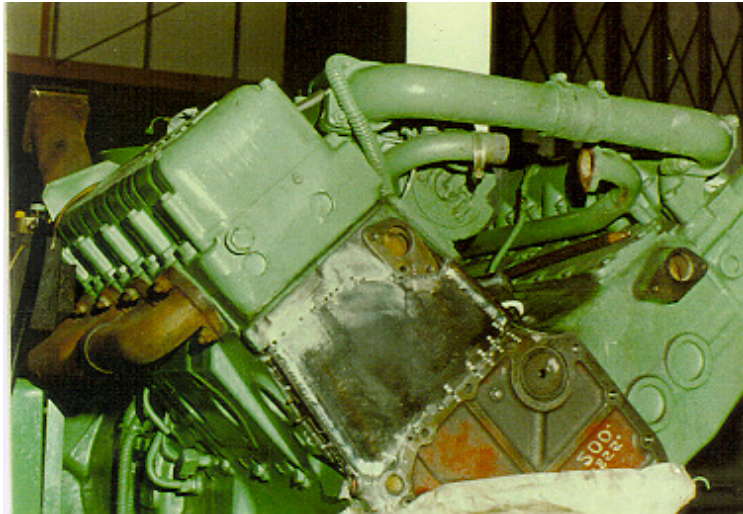


# Metal Stitching

## ***Cold Temperatures Crack Hot Engine***

*Freeze damage caused cracks in this shipboard engine.*

***Stitching*** - joins broken cast iron and dissimilar metal to like-new condition, on-site or in-house. Stitching restores casting strength to equal or better than original shock load capacity.

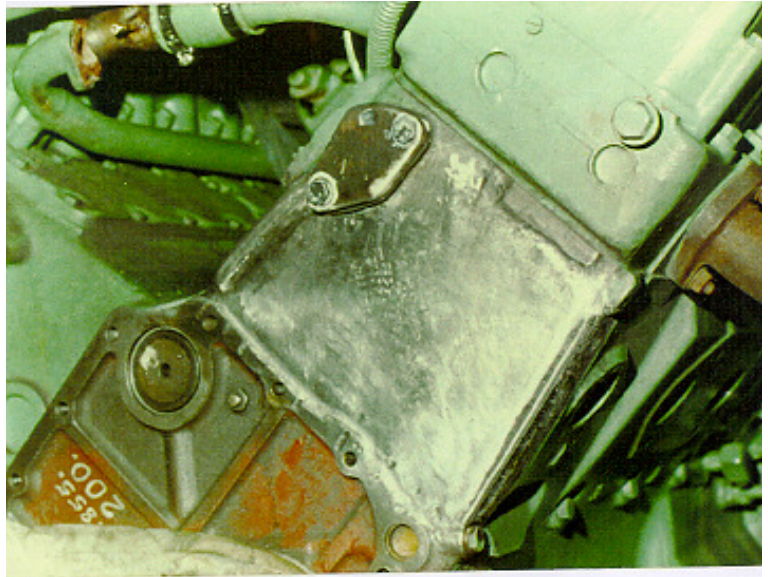


## **THE PROBLEM**

Prior weld repair failed immediately.

## **THE FIX AND THE RESULTS**

Metal Surgery fabricated and installed new sections. The repair was hydro-tested and considered to be good as new.



## **METAL SURGERY, MILW. Ltd.**

182 W. Oklahoma Ave. Building #23  
Milwaukee, WI 53207  
(414) 744-8313 Fax: (414) 744-8770

The ***Get-It-Done*** Professionals in World-Wide Repair